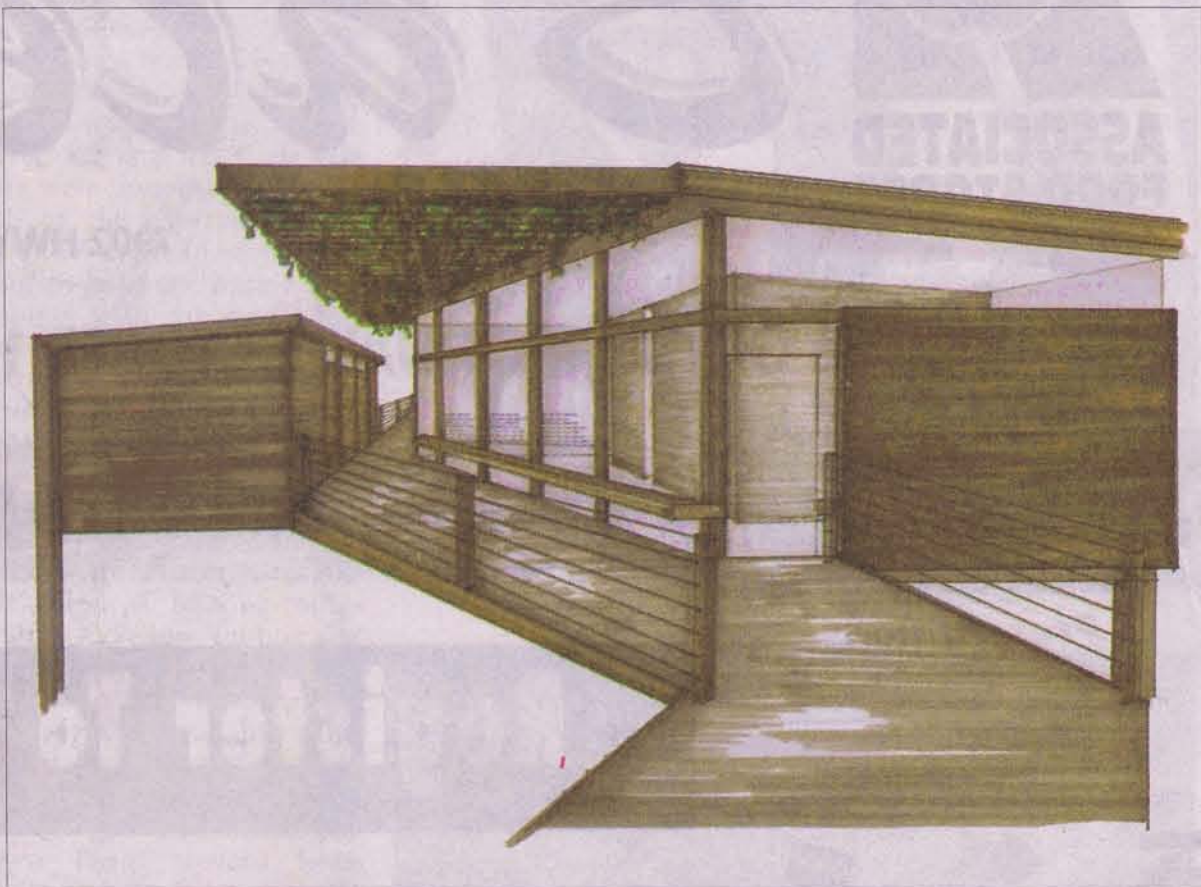


Woodlands Trail – LSU share conceptual designs



This early conceptual design of the Woodlands Trail and Park Interpretive Center is nestled within existing native trees and sits within a constructed wetland.



Participants from various government and non-governmental organizations provided feedback to Woodlands Trail and Park and LSU School of Architecture on conceptual designs for the Woodlands Trail and Park Interpretive Center. Some of those present at the meeting included (Left to right) Heidi Poche, Woodlands Trail and Park, Denis Rousselle, Plaquemines Parish Schools Superintendent, Charles Ballay, District Attorney, Amanda Behey, Congressman Charlie Melancon's Office, James Madere, Plaquemines Historical Association, Lynda Banta, Plaquemines Parish Council Chair, Robert Wolfe, Molly Buckley, Entergy, Guy Motsinger, President, Woodlands Trail and Park, Benny Puckett, Plaquemines Parish Government, Diane Roy, Lee Dupont, Woodlands Trail and Park and Dr. Frank Bosworth. LSU School of Architecture.

Woodlands Trail and Park located in Belle Chasse near the Primary School provides a unique opportunity for residents and visitors to hike and ride horseback through one of Southeastern Louisiana's last stands of bottomland hardwoods. This unique forest includes over 13-miles of trails that traverse through upland and wetland environments and lead to a grouping of World War II Ammunition Magazines. With funding from the Mississippi River Partnership of Community Foundations through the Greater New Orleans Foundation, Woodlands Trail and Park was able to contract with LSU School of Architecture to design an Interpretive Center and potential River Pavilion. The designs were shared with community leaders and organizations at a stakeholder's meeting at the Belle Chasse Library in September to get feedback during the early designing phase. Valuable input such as considering the new hurricane wind ratings when spacing large windows, providing for river levee bicycle and joggers and incorporating an "Arbor Shop" into the Interpretive Center and strong support for the incorporation of wind turbines will guide the next phase of design. Dr. Marsha R. Cuddeback, AIA, LEED AP Director, Office of Community Design and Development and Frank Bosworth, LSU School of Architecture, are working on the project with students including Lizzy Wil-

liams and Jonathan LeJune. The design for the Woodlands Trail Interpretive Center includes state-of-the-art green building techniques and is designed to be a teaching tool in both its design and contents. The interpretive center is designed to tell the cultural and natural history of the geographical area including such topics as the early plantation era, flood of 1927, value of native habitat and impacts from hurricane activity.

The River Pavilion design includes interpretive panels that acknowledge the contribution of the Army Corp of Engineers, Coast Guard, River Pilots and others who manage activities along the "Mighty Mississippi" as well as tell the "stories" of events occurring at the site such as the historic English Turn in 1699.

Wind turbines incorporated into the site could provide the power for lighting along the levee for portions of the Mississippi River Trail. The oral and written comments provided by participants will guide the next design phase that will lead to physical models with detailed costs.

ConocoPhillips, a long-time corporate partner of Woodlands Trail and Park has provided funding that will allow this second phase of planning to occur. The resulting models and detailed costs could be used for support and fund raising efforts. For more pictures of preliminary designs, visit www.woodlandstrail.org.